



RIVETKING MODEL# RK-93

The RK-93 is a full capacity riveting tool capable of setting a full range of blind rivet sizes. The geared head design reduces operator effort and fatigue. Nose pieces are stored onboard for easy accessibility.



CAPACITY:

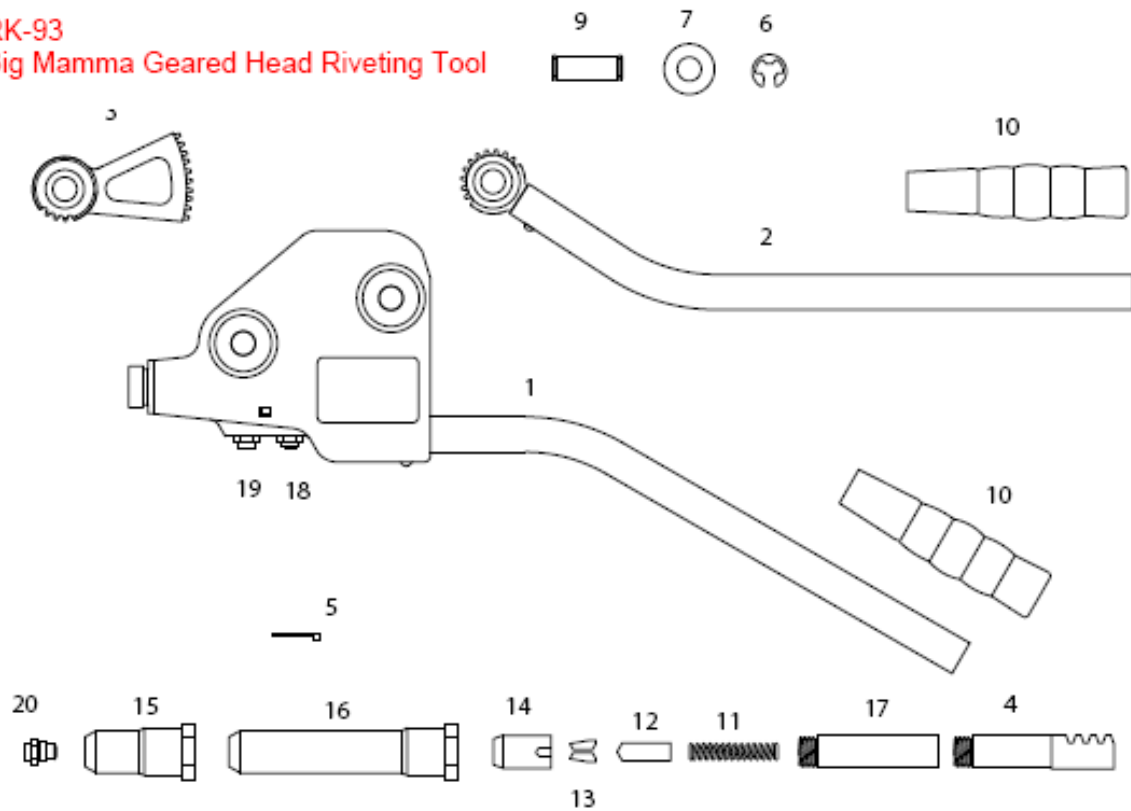
- 1/8" / 3.2mm (all materials)
- 5/32" / 4.0mm (all materials)
- 3/16" / 4.8mm (all materials)
- 1/4" / 6.4mm (all materials)

Industrial Rivet & Fasteners Co. offers a comprehensive tool service and repair program, for details contact your local area sales representative or call direct:



200 Paris Avenue
Northvale, NJ 07647
Tel: (201) 750-1040
Fax: (201) 750-1050

**RK-93
Big Mamma Geared Head Riveting Tool**



REF.	DESCRIPTION	QTY/ASSY.
1	TOOL HOUSING & LOWER HANDLE	1
2	UPPER HANDLE ASSEMBLY	1
3	GEAR SELECTOR	1
4	GEAR RACK	1
5	RACK BEARING PLATE	1
6	RETAINING RING	4
7	PIVOT PIN WASHER	4
9	PIVOT PIN	2
10	HANDLE GRIP	2
11	JAW PUSHER SPRING	1
12	JAW PUSHER	1
13	JAW (2 PIECES)	1
14	COLLET	1
15	HEAD 2 5/16" (58mm)	1
16	HEAD EXT. 4 13/16" (121mm)	1
17	COLLET EXT.	1
18	NOSEPIECE FOR 1/4" KLIK-SPLIT® RIVETS	1
NOT SHOWN	NOSEPIECE FOR 1/8" RIVETS	OPTIONAL
NOT SHOWN	NOSEPIECE FOR 5/32" RIVETS	1
19	NOSEPIECE FOR 3/16" RIVETS	1
20	NOSEPIECE FOR 1/4" RIVETS	1
NOT SHOWN	NOSEPIECE FOR 1/4" MONOBOLT®	OPTIONAL
NOT SHOWN	NOSEPIECE FOR 3/16" MONOBOLT®	OPTIONAL