

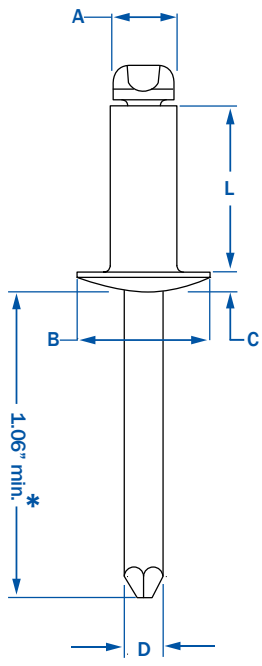
RIVETKING® SBS SERIES • ALL STEEL BLIND RIVETS • OPEN END

RIVET: STEEL TRIVALENT ZINC PLATED • MANDREL: STEEL TRIVALENT ZINC PLATED

OUTPERFORMING ITS PREDECESSORS, THE RIVETKING® STEEL/STEEL RIVETS ARE REVOLUTIONARY. The “pitched” mandrel design offers superior performance when operating in overgrip or undergrip conditions. This design insures that the mandrel head is enveloped by the rivet and helps prevent mandrel rattle/fallout during the life of the assembly. The rivet and mandrel are zinc plated and offer increased resistance to rust. Of the standard open end blind rivets, the SBS series is 3rd strongest in both shear and tensile strength. PER IFI-114 GRADE 30.

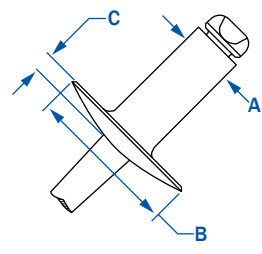


STANDARD FLANGE-DOME HEAD



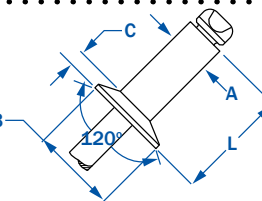
A			L	B	C	D	HOLE SIZE (DRILL #)	STRENGTH		Wt. lbs/M
DIA.	PART NUMBER	GRIP RANGE	RIVET LENGTH	HEAD DIA.	HEAD HEIGHT	MANDREL DIA.		SHEAR	TENSILE	
3/32"	SBS - 32	.020 - .125	.250	.188	.032	.057	.097 - .100 (#41)	130	170	1.50
	SBS - 34	.126 - .250	.375							1.70
	SBS - 41	.020 - .062	.212							2.80
	SBS - 42	.063 - .125	.275							2.90
	SBS - 43	.126 - .187	.337							3.10
1/8"	SBS - 44	.188 - .250	.400	.250	.040	.076	.129 - .133 (#30)	260	310	3.30
	SBS - 45	.251 - .312	.462							3.60
	SBS - 46	.313 - .375	.525							3.70
	SBS - 48	.376 - .500	.650							3.70
	SBS - 410	.501 - .625	.775							4.78
	SBS - 412	.626 - .750	.900							
	SBS - 52	.020 - .125	.300							.312
SBS - 53	.126 - .187	.362	5.25							
SBS - 54	.188 - .250	.425	5.50							
SBS - 56	.251 - .375	.550	6.67							
SBS - 58	.376 - .500	.675	6.83							
3/16"	SBS - 62	.020 - .125	.325	.375	.060	.114	.192 - .196 (#11)	540	680	7.80
	SBS - 63	.126 - .187	.387							8.20
	SBS - 64	.188 - .250	.450							8.60
	SBS - 66	.251 - .375	.575							9.40
	SBS - 68	.376 - .500	.700							10.75
	SBS - 610	.501 - .625	.825							11.75
	SBS - 612	.626 - .750	.950							11.75
	SBS - 614	.751 - .875	1.075							14.33
	SBS - 616	.876 - 1.00	1.200							14.67
	SBS - 84	.020 - .250	.500							.500
SBS - 86	.251 - .375	.625	17.50							
SBS - 88	.376 - .500	.750	19.00							
SBS - 810	.501 - .625	.875	23.00							
SBS - 812	.626 - .750	1.000	24.50							
SBS - 814	.751 - .875	1.125	27.00							
SBS - 816	.876 - 1.00	1.250	28.00							

LARGE FLANGE



1/8"	SBS - 42LF	.063 - .125	.275	.375	.065	.076	.129 - .133 (#30)	260	310	3.30
	SBS - 43LF	.126 - .187	.337							3.50
	SBS - 44LF	.188 - .250	.400							3.60
	SBS - 46LF	.313 - .375	.525							4.63
	SBS - 48LF	.376 - .500	.650							4.63
5/32"	SBS - 52LF	.020 - .125	.300	.468	.075	.095	.160 - .164 (#20)	370	470	7.50
	SBS - 54LF	.188 - .250	.362							8.33
	SBS - 56LF	.251 - .375	.425							
3/16"	SBS - 62LF	.020 - .125	.325	.625	.092	.114	.192 - .196 (#11)	540	680	12.67
	SBS - 64LF	.188 - .250	.450							13.33
	SBS - 66LF	.251 - .375	.575							14.67
	SBS - 68LF	.376 - .500	.700							16.00
	SBS - 610LF	.501 - .625	.825							16.00
	SBS - 612LF	.626 - .750	.950							17.00
	SBS - 614LF	.751 - .875	1.075							18.00
	SBS - 616LF	.876 - 1.00	1.200							
1/4"	SBS - 88LF	.376 - .500	.750	.750	1.07	.151	.257 - .261	1000	1240	

COUNTERSUNK



1/8"	SCS - 42	.063 - .125	.275	.220	.031	.076	.129 - .133 (#30)	260	310	3.00
	SCS - 43	.126 - .187	.337							3.10
	SCS - 44	.188 - .250	.400							3.30
5/32"	SCS - 54	.188 - .250	.425	.281	.040	.095	.160 - .164	370	470	5.25
3/16"	SCS - 64	.188 - .250	.450	.350	.050	.114	.192 - .196 (#11)	540	680	8.20
	SCS - 66	.251 - .375	.575							9.60

* 1/4" Diameter rivets have a 1.250 mandrel length minimum.



1-800-BUY-RIVET