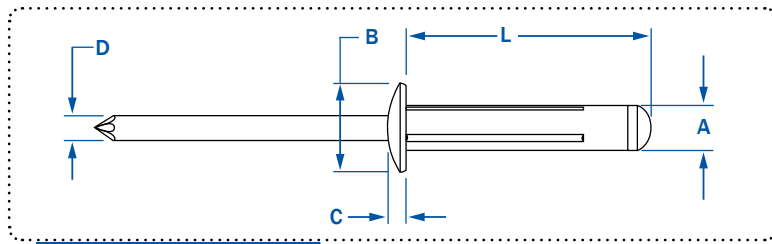


RIVETKING® TRIFIX™

ALL ALUMINUM • TRI-FOLDING RIVET



RIVET: ALUMINUM
MANDREL: ALUMINUM

Perfect for inconsistent grip ranges or oversize out-of-round holes that are typical in plastics. RivetKing® TriFix™ is designed to work like a moly-bolt in that it splits out into three legs at the backside. Its extended bearing surface spreads the load over a wider area to prevent pullout in plastics or other similar soft or thin sheet materials. Bright polished and stocked in white, black and almond colors.



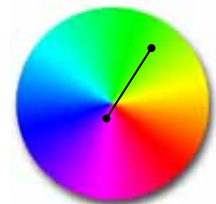
STOCK COLORS



HEAD STYLE	PART NUMBER	A		L		B		C		D	
		RIVET SIZE	GRIP RANGE	LENGTH	HEAD DIA	HEAD HEIGHT	MANDREL DIA	HOLE SIZE	SHEAR	TENSILE	
			MIN - MAX	REF.	NOM.	NOM.	NOM.	MIN - MAX	LBS.F	LBS.F	
DOME HEAD	ABL - 0516	5/32"	.040 - .118	.605	.315	.032	.094	.165 - .178	134	224	
	ABL - 0523		.040 - .275	.810							
	ABL - 0530		.157 - .472	1.070							
	DOME HEAD	ABL - 0619	3/16"	.040 - .157	.684	.386	.062	.114	.196 - .209	202	269
		ABL - 0625		.040 - .354	.906						
		ABL - 0630		.157 - .472	1.070						
		ABL - 0640		.157 - .625	1.200						
LARGE FLANGE	ABL - 0523LF	5/32"	.040 - .275	.810	.472	.055	.094	.165 - .178	134	224	
	ABL - 0625LF14	3/16"	.040 - .354	.906	.551	.062	.114	.196 - .209	202	269	
	ABL - 0625LF16				.625	.070					
PAINTED DOME HEAD	ABL - 0523/ BA	5/32"	.040 - .275	.810	.315	.032	.094	.165 - .178	134	224	
	ABL - 0625/ WHT	3/16"	.040 - .354	.906	.386	.386	.114	.196 - .209	202	269	
	ABL - 0625/ ALM										
	ABL - 0625/ BA										
	ABL - 0630/ WHT	3/16"	.157 - .472	1.070	.386	.386	.114	.196 - .209	202	269	
	ABL - 0630/ ALM										
	ABL - 0630/ BA										
ABL - 0630/ BA											



Sample color of the TriFix™



* Can color match to Pantone, RAL or sample upon request.

