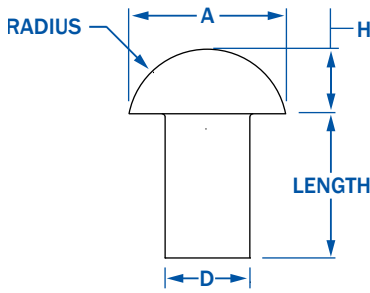


# RIVETKING® SMALL DIAMETER SOLID RIVET DIMENSION FOR STEEL, BRASS, COPPER, STAINLESS AND MONEL

IFI STANDARD

SOLID RIVETS

## ROUND HEAD RIVETS

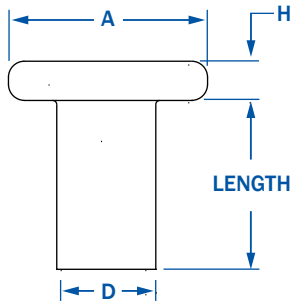


APPROXIMATE PROPORTIONS:  
 A = 1.750 X D  
 H = 0.750 X D  
 R = 0.885 X D

NOMINAL	D DIAMETER OF BODY		A HEAD DIAMETER			H HEAD HEIGHT			R HEAD RADIUS	L LENGTH UNDER HEAD
	MAX.	MIN.	NOM.	MAX.	MIN.	NOM.	MAX.	MIN.		
3/32 - .094	0.096	0.090	0.166	0.182	0.162	0.071	0.077	0.065	0.084	ORDERED LENGTH UNDER HEAD TO END.
1/8 - .125	0.127	0.121	0.219	0.235	0.215	0.094	0.100	0.088	0.111	
5/32 - .156	0.158	0.152	0.273	0.290	0.268	0.117	0.124	0.110	0.138	
3/16 - .188	0.191	0.182	0.327	0.348	0.322	0.140	0.147	0.133	0.166	
7/32 - .219	0.222	0.213	0.385	0.405	0.379	0.165	0.172	0.158	0.195	
1/4 - .250	0.253	0.244	0.438	0.460	0.430	0.188	0.196	0.180	0.221	
9/32 - .281	0.285	0.273	0.492	0.518	0.484	0.211	0.220	0.202	0.249	
5/16 - .313	0.316	0.304	0.546	0.572	0.538	0.234	0.243	0.225	0.276	
11/32 - .344	0.348	0.336	0.600	0.630	0.592	0.257	0.267	0.247	0.304	
3/8 - .375	0.380	0.365	0.656	0.684	0.646	0.281	0.291	0.271	0.332	
7/16 - .438	0.443	0.428	0.765	0.798	0.754	0.328	0.339	0.317	0.387	

ALL DIAMETERS GIVEN IN INCHES

## FLAT HEAD RIVETS

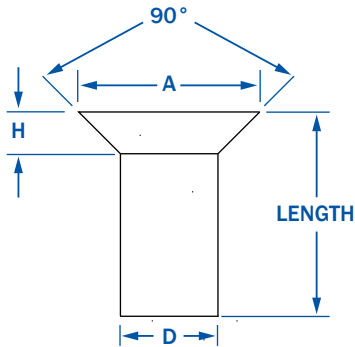


APPROXIMATE PROPORTIONS:  
 A = 2.00 X D  
 H = 0.33 X D

NOMINAL	D DIAMETER OF BODY		A HEAD DIAMETER			H HEAD HEIGHT			L LENGTH UNDER HEAD
	MAX.	MIN.	NOM.	MAX.	MIN.	NOM.	MAX.	MIN.	
3/32 - .094	0.096	0.090	0.190	0.200	0.180	0.032	0.038	0.026	ORDERED LENGTH UNDER HEAD TO END.
1/8 - .125	0.127	0.121	0.250	0.260	0.240	0.042	0.048	0.036	
5/32 - .156	0.158	0.152	0.312	0.323	0.301	0.052	0.059	0.045	
3/16 - .188	0.191	0.182	0.374	0.387	0.361	0.062	0.069	0.055	
7/32 - .219	0.222	0.213	0.440	0.453	0.427	0.073	0.080	0.065	
1/4 - .250	0.253	0.244	0.500	0.515	0.485	0.083	0.091	0.075	
9/32 - .281	0.285	0.273	0.562	0.579	0.545	0.094	0.103	0.085	
5/16 - .312	0.316	0.304	0.624	0.641	0.607	0.104	0.113	0.095	
11/32 - .344	0.348	0.336	0.686	0.705	0.667	0.114	0.124	0.104	
3/8 - .375	0.380	0.365	0.750	0.769	0.731	0.125	0.135	0.115	
7/16 - .438	0.443	0.428	0.874	0.896	0.852	0.146	0.157	0.135	

ALL DIAMETERS GIVEN IN INCHES

## 90° COUNTERSUNK HEAD RIVETS

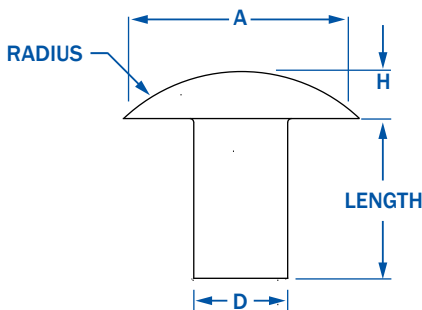


APPROXIMATE PROPORTIONS:  
 A = 2.500 X D  
 H = 0.330 X D  
 R = 2.512 X D

NOMINAL	D DIAMETER OF BODY		A HEAD DIAMETER			H HEAD HEIGHT	INCLUDED ANGLE	L OVERALL LENGTH
	MAX.	MIN.	NOM.	MAX.	MIN.			
3/32 - .094	0.096	0.090	0.169	0.176	0.163	0.040	90	ORDERED LENGTH.
1/8 - .125	0.127	0.121	0.231	0.235	0.217	0.053	90	
5/32 - .156	0.158	0.152	0.289	0.293	0.272	0.066	90	
3/16 - .188	0.191	0.182	0.346	0.351	0.326	0.079	90	
7/32 - .219	0.222	0.213	0.407	0.413	0.384	0.094	90	
1/4 - .250	0.253	0.244	0.463	0.469	0.437	0.106	90	
9/32 - .281	0.285	0.273	0.520	0.528	0.491	0.119	90	
5/16 - .313	0.316	0.304	0.577	0.588	0.547	0.133	90	
11/32 - .344	0.348	0.336	0.635	0.646	0.602	0.146	90	
3/8 - .375	0.380	0.365	0.694	0.704	0.656	0.159	90	
7/16 - .438	0.443	0.428	0.808	0.823	0.765	0.186	90	

ALL DIAMETERS GIVEN IN INCHES

## TRUSS HEAD RIVETS



APPROXIMATE PROPORTIONS:  
 A = 1.850 X D  
 H = 0.425 X D

NOMINAL SIZE OR BASIC SHANK DIAMETER	D SHANK DIAMETER		A HEAD DIAMETER		H HEAD HEIGHT		R HEAD RADIUS	L OVERALL LENGTH
	MAX.	MIN.	MAX.	MIN.	MAX.	MIN.	APPROX.	
3/32 - .094	0.096	0.090	0.226	0.206	0.038	0.026	0.239	ORDERED LENGTH.
1/8 - .125	0.127	0.121	0.297	0.277	0.048	0.036	0.314	
5/32 - .156	0.158	0.152	0.368	0.348	0.059	0.045	0.392	
3/16 - .188	0.191	0.182	0.442	0.422	0.069	0.055	0.470	
7/32 - .219	0.222	0.213	0.515	0.495	0.080	0.066	0.555	
1/4 - .250	0.253	0.244	0.590	0.560	0.091	0.075	0.628	
9/32 - .281	0.285	0.273	0.661	0.631	0.103	0.085	0.706	
5/16 - .313	0.316	0.304	0.732	0.702	0.113	0.095	0.784	
11/32 - .344	0.348	0.336	0.806	0.776	0.124	0.104	0.862	
3/8 - .375	0.380	0.365	0.878	0.848	0.135	0.115	0.942	
13/32 - .406	0.411	0.396	0.949	0.919	0.145	0.123	1.028	
7/16 - .438	0.443	0.428	1.020	0.990	0.157	0.135	1.098	

ALL DIAMETERS GIVEN IN INCHES