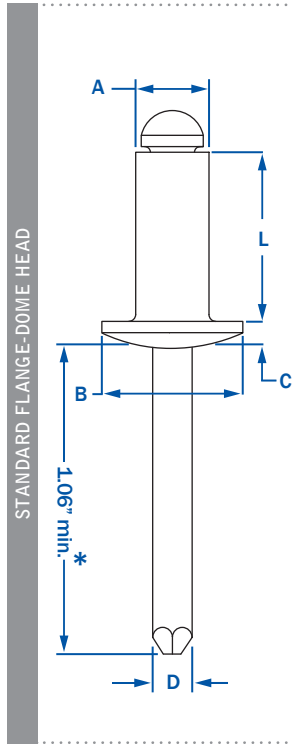
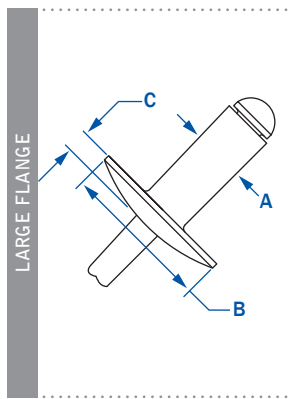


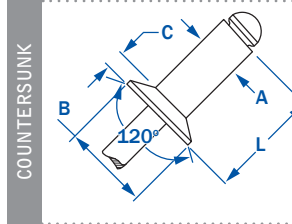
RIVETKING® ALUMINUM/ALUMINUM BLIND RIVETS BRIGHT POLISHED TO IMPROVE OXIDATION RESISTANCE AND OVERALL AESTHETICS OF THE RIVETED PRODUCT. Our rivets are tested to ensure consistent error free application from rivet to rivet. A special treatment applied to the rivet insures the mandrel will be encased by the rivet during application. The blunt diamond point prevents injury while improving application speed. All aluminum rivets are ranked #5 in shear and tensile strength for open end standards. PER IFI-114 GRADE 11.



A			L	B	C	D	STRENGTH		Wt.	
DIA.	PART NUMBER	GRIP RANGE	RIVET LENGTH	HEAD DIA.	HEAD HEIGHT	MANDREL DIA.	HOLE SIZE (DRILL #)	SHEAR	TENSILE	lbs/M
3/32"	ABA - 32	.020 - .125	.250	.188	.032	.057	.097 - .100 (#41)	70	80	.70
	ABA - 34	.126 - .250	.375							.70
1/8"	ABA - 41	.020 - .062	.212	.250	.040	.076	.129 - .133 (#30)	120	150	1.00
	ABA - 42	.063 - .125	.275							1.10
	ABA - 43	.126 - .187	.337							1.20
	ABA - 44	.188 - .250	.400							1.30
	ABA - 45	.251 - .312	.462							1.30
	ABA - 46	.313 - .375	.525							1.40
	ABA - 48	.376 - .500	.650							1.50
	ABA - 410	.501 - .625	.775							1.67
	ABA - 412	.626 - .750	.900							
	ABA - 52	.020 - .125	.300							
5/32"	ABA - 53	.126 - .187	.362	.312	.050	.095	.160 - .164 (#20)	190	230	1.88
	ABA - 54	.188 - .250	.425							2.00
	ABA - 56	.251 - .375	.550							2.50
	ABA - 58	.376 - .500	.675							2.50
3/16"	ABA - 62	.020 - .125	.325	.375	.060	.114	.192 - .196 (#11)	260	320	2.80
	ABA - 63	.126 - .187	.387							2.90
	ABA - 64	.188 - .250	.450							3.00
	ABA - 66	.251 - .375	.575							3.40
	ABA - 68	.376 - .500	.700							3.75
	ABA - 610	.501 - .625	.825							4.25
	ABA - 612	.626 - .750	.950							4.50
	ABA - 614	.751 - .875	1.075							5.00
	ABA - 616	.876 - 1.00	1.200							5.33
	1/4"	ABA - 84	.020 - .250							.500
ABA - 86		.251 - .375	.625	7.00						
ABA - 88		.376 - .500	.750	7.50						
ABA - 810		.501 - .625	.875	8.50						
ABA - 812		.626 - .750	1.000	8.50						
ABA - 814		.751 - .875	1.125	10.00						
ABA - 816		.876 - 1.00	1.250	9.88						



1/8"	ABA - 42LF	.063 - .125	.275	.375	.065	.076	.129 - .133 (#30)	120	150	1.20
	ABA - 43LF	.126 - .187	.337							1.30
	ABA - 44LF	.188 - .250	.400							1.40
	ABA - 46LF	.313 - .375	.525							1.75
	ABA - 48LF	.376 - .500	.650							1.89
5/32"	ABA - 52LF	.020 - .125	.300	.468	.075	.095	.160 - .164 (#20)	190	230	2.75
	ABA - 54LF	.188 - .250	.425							2.94
	ABA - 56LF	.251 - .375	.550							
3/16"	ABA - 62LF	.020 - .125	.325	.625	.092	.114	.192 - .196 (#11)	260	320	4.67
	ABA - 64LF	.188 - .250	.450							5.00
	ABA - 66LF	.251 - .375	.575							5.00
	ABA - 68LF	.376 - .500	.700							5.50
	ABA - 610LF	.501 - .625	.825							6.00
	ABA - 612LF	.626 - .750	.950							6.00
	ABA - 614LF	.751 - .875	1.075							6.50
ABA - 616LF	.876 - 1.00	1.200								
1/4"	ABA - 88LF	.376 - .500	.750	.750	1.07	.151	.257 - .261	460	560	



1/8"	ACA - 42	.063 - .125	.275	.220	.031	.076	.129 - .133 (#30)	120	150	1.10
	ACA - 43	.126 - .187	.337							1.20
	ACA - 44	.188 - .250	.400							1.30
5/32"	ACA - 54	.188 - .250	.425	.281	.040	.095	.160 - .164	190	230	1.88
3/16"	ACA - 64	.188 - .250	.450	.350	.050	.114	.192 - .196 (#11)	260	320	2.80
	ACA - 66	.251 - .375	.575							2.80

* 1/4" Diameter rivets have a 1.250 mandrel length minimum.