



RivetKing® FBS Series · Stainless/Steel Rivets · Open End

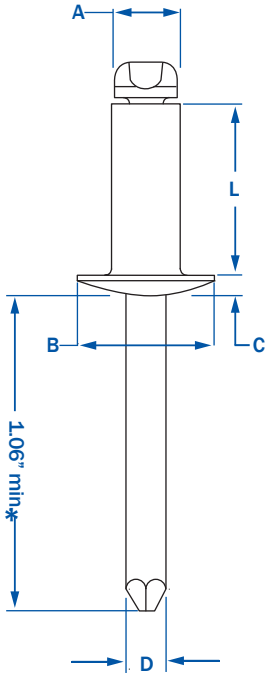
RIVET: 18-8 SERIES STAINLESS STEEL • MANDREL: STEEL TRIVALENT ZINC PLATED

RIVETKING® STAINLESS STEEL RIVET WITH STEEL ZINC PLATED MANDREL (FBS) SERIES IS THE ECONOMICAL ALTERNATIVE TO FBF SERIES.

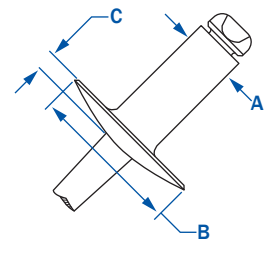
FBS Series offers similar shear and tensile strength and will hold its strength over time in corrosive environments. Because a steel mandrel has the potential to leave a rust trail, for aesthetic applications FBF series is recommended. IFI 114 Grade 50.



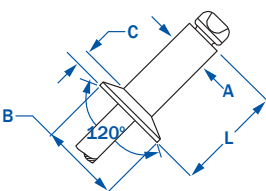
A	DIA.	PART NUMBER	GRIP RANGE	L	RIVET LENGTH	B	C	D	HEAD DIA.	HEAD HEIGHT	MANDREL DIA.	HOLE SIZE (DRILL #)	STRENGTH		Wt. lbs/M
													SHEAR	TENSILE	
STANDARD FLANGE-DOME HEAD	3/32"	FBS - 32	.020 - .125	.250		.188	.032	.057				.097 - .100 (#41)	230	280	
		FBS - 34	.126 - .250	.375											
		FBS - 41	.020 - .062	.212											
	1/8"	FBS - 42	.063 - .125	.275	.250	.040	.076	.129 - .133 (#30)	420	530				2.60	
		FBS - 43	.126 - .187	.337											
		FBS - 44	.188 - .250	.400											
		FBS - 45	.251 - .312	.462											
		FBS - 46	.313 - .375	.525											
		FBS - 48	.376 - .500	.650											
	5/32"	FBS - 52	.020 - .125	.300	.312	.050	.095	.160 - .164 (#20)	650	820				5.00	
		FBS - 53	.126 - .187	.362											
		FBS - 54	.188 - .250	.425											
FBS - 56		.251 - .375	.550												
FBS - 58		.376 - .500	.675												
FBS - 510		.501 - .625	.800												
3/16"	FBS - 62	.063 - .125	.325	.375	.060	.114	.192 - .196 (#11)	950	1200				7.40		
	FBS - 63	.126 - .187	.387												
	FBS - 64	.188 - .250	.450												
	FBS - 66	.251 - .375	.575												
	FBS - 68	.376 - .500	.700												
	FBS - 610	.501 - .625	.825												
	FBS - 612	.626 - .750	.950												
	FBS - 614	.751 - .875	1.075												
	FBS - 616	.876 - 1.000	1.200												
	1/4"	FBS - 84	.063 - .250											.500	.500
FBS - 86		.251 - .375	.625												
FBS - 88		.376 - .500	.750												
FBS - 810		.501 - .625	.875												
FBS - 812		.626 - .750	1.000												



LARGE FLANGE	1/8"	FBS - 42LF	.020 - .125	.275	.375	.065	.076	.129 - .133 (#30)	420	530				3.30
		FBS - 43LF	.126 - .187	.337										
		FBS - 44LF	.188 - .250	.375										
		FBS - 45LF	.251 - .312	.462										
		FBS - 46LF	.313 - .375	.525										
	5/32"	FBS - 52LF	.020 - .125	.300	.468	.075	.095	.160 - .164 (#20)	650	820				
		FBS - 53LF	.126 - .187	.362										
		FBS - 54LF	.188 - .250	.425										
		FBS - 56LF	.251 - .375	.550										
	3/16"	FBS - 58LF	.376 - .500	.675	.625	.092	.114	.192 - .196 (#11)	950	1200				10.67
		FBS - 62LF	.063 - .187	.375										
		FBS - 64LF	.188 - .250	.450										
FBS - 66LF		.251 - .375	.575											
FBS - 68LF		.376 - .500	.700											
FBS - 610LF	.501 - .625	.825												
FBS - 612LF	.626 - .750	.950												
FBS - 614LF	.751 - .875	1.075												
FBS - 616LF	.876 - 1.000	1.200												



COUNTERSUNK	1/8"	FCS - 42	.063 - .125	.275	.220	.031	.076	.129 - .133 (#30)	420	530				3.00
		FCS - 43	.126 - .187	.337										
		FCS - 44	.188 - .250	.400										
	5/32"	FCS - 54	.188 - .250	.425	.281	.040	.095	.160 - .164	650	820				5.36
		FCS - 64	.188 - .250	.450										
	3/16"	FCS - 66	.251 - .375	.575	.350	.050	.114	.192 - .196 (#11)	950	1200				7.60
FCS - 66		.251 - .375	.575											



* 1/4" Diameter rivets have a 1.250 mandrel length minimum.