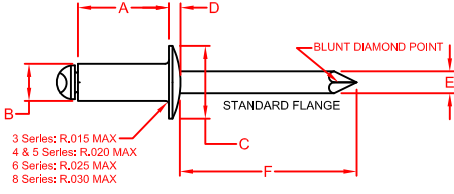
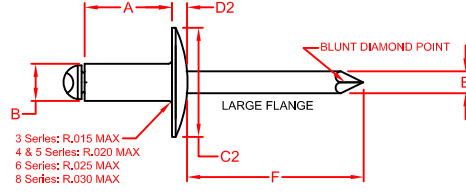


# RIVETKING® STANDARD BLIND RIVETS

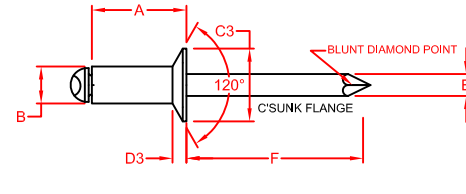
## ALUMINUM / STEEL - OPEN END



3 Series: R,015 MAX  
4 & 5 Series: R,020 MAX  
6 Series: R,025 MAX  
8 Series: R,030 MAX



3 Series: R,015 MAX  
4 & 5 Series: R,020 MAX  
6 Series: R,025 MAX  
8 Series: R,030 MAX



RIVET DIA.	SIZE CODE	GRIP RANGE		A LENGTH	B BODY DIA.	E MANDREL DIA.	F MANDREL PROTRUDE	SHEAR LBS.F	TENSILE LBS.F
		MIN	MAX						
3/32"	32	.020	.125	.250	.096 .090	.057	1.00	70	80
	34	.126	.250	.375					
1/8"	41	.020	.062	.212	.128 .122	.076	1.00	120	150
	42	.063	.125	.275					
	43	.126	.187	.337					
	44	.126*	.250	.400					
	45	.251	.312	.462					
	46	.251	.375	.525					
	48	.376	.500	.650					
5/32"	52	.020	.125	.300	.159 .153	.096	1.06	190	230
	53	.126	.187	.362					
	54	.126*	.250	.425					
	56	.251	.375	.550					
	58	.376	.500	.675					
	510	.501	.625	.800					
	512	.626	.750	.925					
3/16"	62	.020	.125	.325	.191 .183	.114	1.06	260	320
	63	.126	.187	.387					
	64	.126*	.250	.450					
	66	.251	.375	.575					
	68	.376	.500	.700					
	610	.501	.625	.825					
	612	.626	.750	.950					
	614	.751	.875	1.075					
	616	.876	1.000	1.200					
	620	1.126	1.250	1.450					
1/4"	82	.020	.125	.375	.255 .246	.151	1.25	460	560
	84	.126	.250	.500					
	86	.251	.375	.625					
	88	.376	.500	.750					
	810	.501	.625	.875					
	812	.626	.750	1.000					
	814	.751	.875	1.125					
	816	.876	1.000	1.250					
	818	1.001	1.125	1.375					
	820	1.126	1.250	1.500					

STANDARD FLANGE - DOME HEAD		
PART NUMBER	C HEAD DIA.	D HEAD HT.
		MAX.
ABS 32 /IR	.198	.032
ABS 34 /IR	.178	.032
ABS 41 /IR		
ABS 42 /IR		
ABS 43 /IR		
ABS 44 /IR	.262	.040
ABS 45 /IR	.238	.040
ABS 46 /IR		
ABS 48 /IR		
ABS 410 /IR		
ABS 52 /IR		
ABS 53 /IR		
ABS 54 /IR		
ABS 56 /IR	.328	.050
ABS 58 /IR	.296	.050
ABS 510 /IR		
ABS 512 /IR		
ABS 62 /IR		
ABS 63 /IR		
ABS 64 /IR		
ABS 66 /IR		
ABS 68 /IR	.394	.060
ABS 610 /IR	.356	.060
ABS 612 /IR		
ABS 614 /IR		
ABS 616 /IR		
ABS 620 /IR		
ABS 82 /IR		
ABS 84 /IR		
ABS 86 /IR		
ABS 88 /IR		
ABS 810 /IR	.525	.080
ABS 812 /IR	.475	.080
ABS 814 /IR		
ABS 816 /IR		
ABS 818 /IR		
ABS 820 /IR		

LARGE FLANGE - DOME HEAD		
PART NUMBER	C2 HEAD DIA.	D2 HEAD HT.
		MAX.
ABS 32LF /IR	.293	.040
ABS 34LF /IR	.269	.040
ABS 41LF /IR		
ABS 42LF /IR		
ABS 43LF /IR		
ABS 44LF /IR	.390	.065
ABS 45LF /IR	.360	.065
ABS 46LF /IR		
ABS 48LF /IR		
ABS 410LF /IR		
ABS 52LF /IR		
ABS 53LF /IR		
ABS 54LF /IR		
ABS 56LF /IR	.488	.075
ABS 58LF /IR	.448	.075
ABS 510LF /IR		
ABS 512LF /IR		
ABS 62LF /IR		
ABS 63LF /IR		
ABS 64LF /IR		
ABS 66LF /IR		
ABS 68LF /IR	.650	.092
ABS 610LF /IR	.600	.092
ABS 612LF /IR		
ABS 614LF /IR		
ABS 616LF /IR		
ABS 620LF /IR		
ABS 82LF /IR		
ABS 84LF /IR		
ABS 86LF /IR		
ABS 88LF /IR		
ABS 810LF /IR	.780	.107
ABS 812LF /IR	.720	.107
ABS 814LF /IR		
ABS 816LF /IR		
ABS 818LF /IR		
ABS 820LF /IR		

COUNTERSUNK HEAD		
PART NUMBER	C3 HEAD DIA.	D3 HEAD HT.
		REF.
ACS 32 /IR	.187	.027
ACS 34 /IR	.161	.027
ACS 41 /IR		
ACS 42 /IR		
ACS 43 /IR		
ACS 44 /IR	.233	.031
ACS 45 /IR	.207	.031
ACS 46 /IR		
ACS 48 /IR		
ACS 410 /IR		
ACS 52 /IR		
ACS 53 /IR		
ACS 54 /IR		
ACS 56 /IR	.294	.040
ACS 58 /IR	.268	.040
ACS 510 /IR		
ACS 512 /IR		
ACS 62 /IR		
ACS 63 /IR		
ACS 64 /IR		
ACS 66 /IR		
ACS 68 /IR	.361	.050
ACS 610 /IR	.335	.050
ACS 612 /IR		
ACS 614 /IR		
ACS 616 /IR		
ACS 620 /IR		
ACS 82 /IR		
ACS 84 /IR		
ACS 86 /IR		
ACS 88 /IR		
ACS 810 /IR	.484	.060
ACS 812 /IR	.456	.060
ACS 814 /IR		
ACS 816 /IR		
ACS 818 /IR		
ACS 820 /IR		

DRAWN: SBS		DATE: 4-1-08	CHECKED: JGE	SHEET 1 OF 1		
DESCRIPTION: 5052 ALUMINUM / STEEL BLIND RIVETS					DIMENSIONS IN INCHES UNLESS OTHERWISE STATED. METRIC DIMENSIONS IN PARENTHESIS. ALL DIMENSIONS TO UNLESS OTHERWISE SPECIFIED.	
LIMITS UNLESS STATED	DECIMAL ANGLE	±2°	SURFACE TEXTURE	RA	ORIGINAL SHEET SIZE 8.5" X 11"	
<b>Industrial Rivet &amp; Fastener Co.</b>		200 PARTS AVENUE NORTHVALE, NJ, 07647 TEL: (201) 750 1040 info@rivetking.com		REV: F		
DRAWING NUMBER:		ABS-ACS/5052 SERIES		MASTER DWG: BR-0E-2008-1 LOCN: SER/REV/UE/PRINTS/4-INTERNAL/MAST		
SURFACE TREATMENT		RIVET: Bright Polish MANDREL: Zn Plated, Cr3+ ROHS Compliant		ANGLE TOLERANCE FROM 1° TO 2°		
HEAT TREATMENT:		RIVET: Belt Anneal @ 660°F for 90 Mins. MANDREL: None		TABLES REDRAWN		
MATERIAL:		RIVET: 5052M Aluminum per MS-01 MANDREL: C1022-1045M Steel per MS-02 RIVETKING Spec#MS-01/MS-02 I/FI Grade 19		ADDED IRF MATERIAL SPEC "MS-XX"		
PROCESSING: MTL RCPT, COLDFORM1, COLDFORM2, FINISH, ANNEAL, ASS'LY, FOC, FINISH PACK		REV: F		DATE: 3-16-2016		
REV: F		REV: F		DATE: 5-10-11		
REV: F		REV: F		DATE: 12-8-08		
REV: F		REV: F		DATE: 9-15-08		
REV: F		REV: F		DATE: 8-12-08		
REV: F		REV: F		DATE: 1-1-08		
REV: F		REV: F		DATE:		