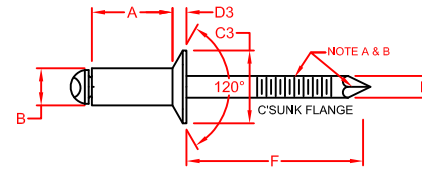
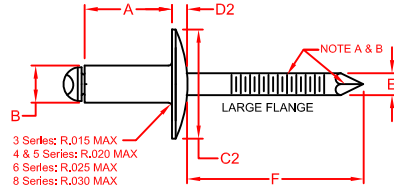
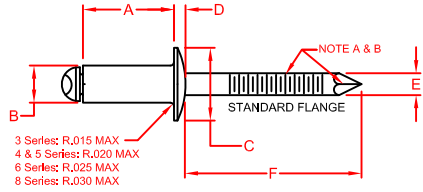


RIVETKING® STANDARD BLIND RIVETS

STAINLESS STEEL / STAINLESS STEEL - OPEN END



NOTE A: MANDREL POINT PER RIVETKING STANDARD
NOTE B: GROOVED MANDREL

RIVET DIA.	SIZE CODE	GRIP RANGE		A	B	E	F	SHEAR LBS.F	TENSILE LBS.F
		MIN	MAX	LENGTH	BODY DIA.	MANDREL DIA	MANDREL PROTRUDE		
NOM.	SIZE	MIN	MAX	MAX				MIN.	MIN.
3/32"	32	.020	.125	.250	.096			230	280
	34	.126	.250	.375	.090				
1/8"	41	.020	.062	.212	.128 .122	.076	1.00	420	530
	42	.063	.125	.275					
	43	.126	.187	.337					
	44	.126*	.250	.400					
	45	.251	.312	.462					
	46	.251	.375	.525					
5/32"	410	.501	.625	.775	.159 .153	.096	1.06	650	820
	52	.020	.125	.300					
	53	.126	.187	.362					
	54	.126*	.250	.425					
	56	.251	.375	.550					
	58	.376	.500	.675					
3/16"	62	.020	.125	.325	.191 .183	.114	1.06	950	1200
	63	.126	.187	.387					
	64	.126*	.250	.450					
	66	.251	.375	.575					
	68	.376	.500	.700					
	610	.501	.625	.825					
	612	.626	.750	.950					
	614	.751	.875	1.075					
	616	.876	1.000	1.200					
	620	1.126	1.250	1.450					
1/4"	82	.020	.125	.375	.255 .246	.151	1.25	1700	2100
	84	.126	.250	.500					
	86	.251	.375	.625					
	88	.376	.500	.750					
	810	.501	.625	.875					
	812	.626	.750	1.000					
	814	.751	.875	1.125					
	816	.876	1.000	1.250					
	818	1.001	1.125	1.375					
	820	1.126	1.250	1.500					

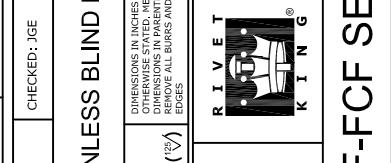
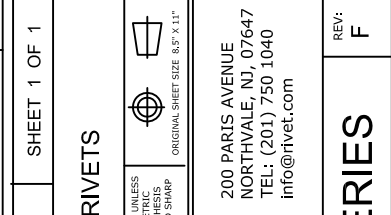
STANDARD FLANGE - DOME HEAD		
PART NUMBER	C	D
	HEAD DIA.	HEAD HT. MAX.
FBF 32	.198	.032
FBF 34	.178	
FBF 41		
FBF 42		
FBF 43		
FBF 44	.262	.040
FBF 45	.238	
FBF 46		
FBF 48		
FBF 410		
FBF 52		
FBF 53		
FBF 54		
FBF 56	.328	.050
FBF 58	.296	
FBF 510		
FBF 512		
FBF 62		
FBF 63		
FBF 64		
FBF 66		
FBF 68	.394	.060
FBF 610	.356	
FBF 612		
FBF 614		
FBF 616		
FBF 620		
FBF 82		
FBF 84		
FBF 86		
FBF 88		
FBF 810	.525	.080
FBF 812	.475	
FBF 814		
FBF 816		
FBF 818		
FBF 820		

LARGE FLANGE - DOME HEAD		
PART NUMBER	C2	D2
	HEAD DIA.	HEAD HT. MAX.
FBF 32LF	.293	.040
FBF 34LF	.269	
FBF 41LF		
FBF 42LF		
FBF 43LF		
FBF 44LF	.390	.065
FBF 45LF	.360	
FBF 46LF		
FBF 48LF		
FBF 410LF		
FBF 52LF		
FBF 53LF		
FBF 54LF		
FBF 56LF	.488	.075
FBF 58LF	.448	
FBF 510LF		
FBF 512LF		
FBF 62LF		
FBF 63LF		
FBF 64LF		
FBF 66LF		
FBF 68LF	.650	.092
FBF 610LF	.600	
FBF 612LF		
FBF 614LF		
FBF 616LF		
FBF 620LF		
FBF 82LF		
FBF 84LF		
FBF 86LF		
FBF 88LF		
FBF 810LF	.780	.107
FBF 812LF	.720	
FBF 814LF		
FBF 816LF		
FBF 818LF		
FBF 820LF		

COUNTERSUNK HEAD		
PART NUMBER	C3	D3
	HEAD DIA.	HEAD HT. REF.
FCF 32	.187	.027
FCF 34	.161	
FCF 41		
FCF 42		
FCF 43		
FCF 44	.233	.031
FCF 45	.207	
FCF 46		
FCF 48		
FCF 410		
FCF 52		
FCF 53		
FCF 54		
FCF 56	.294	.040
FCF 58	.268	
FCF 510		
FCF 512		
FCF 62		
FCF 63		
FCF 64		
FCF 66		
FCF 68	.361	.050
FCF 610	.335	
FCF 612		
FCF 614		
FCF 616		
FCF 620		
FCF 82		
FCF 84		
FCF 86		
FCF 88		
FCF 810	.484	.060
FCF 812	.456	
FCF 814		
FCF 816		
FCF 818		
FCF 820		

DATE: 4-1-08	CHECKED: JGE	SHEET 1 OF 1	DESCRIPTION: ALL STAINLESS BLIND RIVETS
DRAWN: SBS	DATE: 4-1-08	CHECKED: JGE	SHEET 1 OF 1
LIMITS UNLESS STATED	DECIMAL ANGULAR SURFACE TEXTURE	#.015 ±2°	ORIGINAL SHEET SIZE 8.5" X 11"
Industrial Rivet & Fastener Co.	200 PARTS AVENUE NORTHVALE, NJ, 07647 TEL: (201) 750 1040 info@rivet.com	REV: F	FBF-FCF SERIES
ANGLE TOLERANCE FROM 1° TO 2°	TABLES REDRAWN	ADDED IRF MATERIAL SPEC "MS-XX"	REVISED, ERROR CORRECTION
3-16-2016	5-10-11	12-8-08	8-12-08
1-1-08	DATE	INITIAL RELEASE	DESCRIPTION

SURFACE TREATMENT: RIVET: Bright Polish MANDREL: Bright Polish
HEAT TREATMENT: RIVET: Belt Anneal@2000°F for 20 Minutes&Cool EYELET: Vacuum Anneal @ 1900°F for 3 Hours MANDREL: None
MATERIAL: RIVET: 18-8 Stainless Steel per MS-03 MANDREL: 18-8 Stainless Steel per MS-03 PER RIVETKING SPEC# MS-03 & IFI Grade 51



DRAWING NUMBER: FBF-FCF SERIES