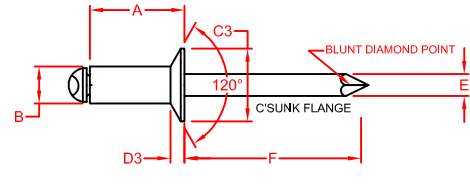
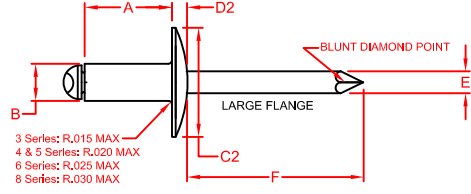
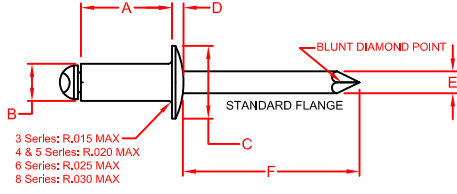


RIVETKING® STANDARD BLIND RIVETS STAINLESS STEEL / STEEL - OPEN END



RIVET DIA.	SIZE CODE	GRIP RANGE		A	B	E	F	SHEAR LBS.F	TENSILE LBS.F
		MIN	MAX	LENGTH	BODY DIA.	MANDREL DIA	MANDREL PROTRUDE		
NOM.	SIZE	MIN	MAX	MAX		NOM.	MIN.	MIN.	MIN.
3/32"	32	.020	.125	.250	.096	.057	1.00	200	230
	34	.126	.250	.375	.090				
1/8"	41	.020	.062	.212	.128 .122	.076	1.00	350	420
	42	.063	.125	.275					
	43	.126	.187	.337					
	44	.126*	.250	.400					
	45	.251	.312	.462					
	46	.251	.375	.525					
	48	.376	.500	.650					
410	.501	.625	.775						
5/32"	52	.020	.125	.300	.159 .153	.096	1.06	550	650
	53	.126	.187	.362					
	54	.126*	.250	.425					
	56	.251	.375	.550					
	58	.376	.500	.675					
	510	.501	.625	.800					
	512	.626	.750	.925					
3/16"	62	.020	.125	.325	.191 .183	.114	1.06	800	950
	63	.126	.187	.387					
	64	.126*	.250	.450					
	66	.251	.375	.575					
	68	.376	.500	.700					
	610	.501	.625	.825					
	612	.626	.750	.950					
	614	.751	.875	1.075					
	616	.876	1.000	1.200					
	620	1.126	1.250	1.450					
1/4"	82	.020	.125	.375	.255 .246	.151	1.25	1400	1700
	84	.126	.250	.500					
	86	.251	.375	.625					
	88	.376	.500	.750					
	810	.501	.625	.875					
	812	.626	.750	1.000					
	814	.751	.875	1.125					
	816	.876	1.000	1.250					
	818	1.001	1.125	1.375					
	820	1.126	1.250	1.500					

STANDARD FLANGE - DOME HEAD		
PART NUMBER	C	D
	HEAD DIA.	HEAD HT. MAX.
FBS 32	.198	.032
FBS 34	.178	
FBS 41		
FBS 42		
FBS 43		
FBS 44	.262	.040
FBS 45	.238	
FBS 46		
FBS 48		
FBS 410		
FBS 52		
FBS 53		
FBS 54		
FBS 56	.328	.050
FBS 58	.296	
FBS 510		
FBS 512		
FBS 62		
FBS 63		
FBS 64		
FBS 66		
FBS 68	.394	.060
FBS 610	.356	
FBS 612		
FBS 614		
FBS 616		
FBS 620		
FBS 82		
FBS 84		
FBS 86		
FBS 88		
FBS 810	.525	.080
FBS 812	.475	
FBS 814		
FBS 816		
FBS 818		
FBS 820		

LARGE FLANGE - DOME HEAD		
PART NUMBER	C2	D2
	HEAD DIA.	HEAD HT. MAX.
FBS 32LF	.293	.040
FBS 34LF	.269	
FBS 41LF		
FBS 42LF		
FBS 43LF		
FBS 44LF	.390	.065
FBS 45LF	.360	
FBS 46LF		
FBS 48LF		
FBS 410LF		
FBS 52LF		
FBS 53LF		
FBS 54LF		
FBS 56LF	.488	.075
FBS 58LF	.448	
FBS 510LF		
FBS 512LF		
FBS 62LF		
FBS 63LF		
FBS 64LF		
FBS 66LF		
FBS 68LF	.650	.092
FBS 610LF	.600	
FBS 612LF		
FBS 614LF		
FBS 616LF		
FBS 620LF		
FBS 82LF		
FBS 84LF		
FBS 86LF		
FBS 88LF		
FBS 810LF	.780	.107
FBS 812LF	.720	
FBS 814LF		
FBS 816LF		
FBS 818LF		
FBS 820LF		

COUNTERSUNK HEAD		
PART NUMBER	C3	D3
	HEAD DIA.	HEAD HT. REF.
FCS 32	.187	.027
FCS 34	.161	
FCS 41		
FCS 42		
FCS 43		
FCS 44	.233	.031
FCS 45	.207	
FCS 46		
FCS 48		
FCS 410		
FCS 52		
FCS 53		
FCS 54		
FCS 56	.294	.040
FCS 58	.268	
FCS 510		
FCS 512		
FCS 62		
FCS 63		
FCS 64		
FCS 66		
FCS 68	.361	.050
FCS 610	.335	
FCS 612		
FCS 614		
FCS 616		
FCS 620		
FCS 82		
FCS 84		
FCS 86		
FCS 88		
FCS 810	.484	.060
FCS 812	.456	
FCS 814		
FCS 816		
FCS 818		
FCS 820		

DRAWN: FBS		DATE: 2-4-09	CHECKED: AV	SHEET 1 OF 1	DESCRIPTION: STAINLESS STEEL/STEEL BLIND RIVETS
LIMITS UNLESS STATED		DECIMAL ±.015	ANGULAR ±2°	SURFACE TEXTURE	 DIMENSIONS IN INCHES UNLESS OTHERWISE STATED. METRIC DIMENSIONS IN PARENTHESES. EDGES - ALL BURS AND SHARP POINTS TO BE REMOVED. ORIGINAL SHEET SIZE 8.5" X 11"
Industrial Rivet & Fastener Co.		200 PARTS AVENUE NORTHVALE, NJ, 07647 TEL: (201) 750 1040 info@rivetking.com		RIVET KING 	3-16-2016 5-10-11 2-4-09 2-4-09 DATE
DRAWING NUMBER:		FBS-FCS SERIES		REV: C	ANGLE TOLERANCE FROM 1° TO 2° TABLES REDRAWN REVISED, ERROR CORRECTION INITIAL RELEASE DESCRIPTION
MASTER DWG: BR-0E-2008-1		LOCN: SER/REV/UPRINTS/4-INTERNAL/MAST			