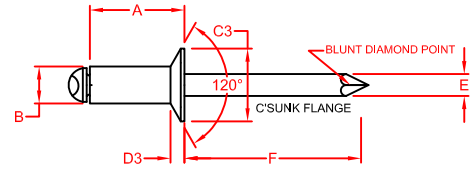
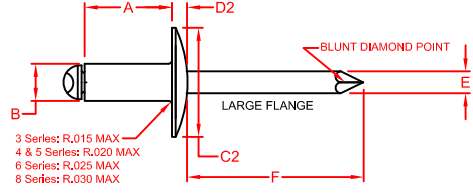
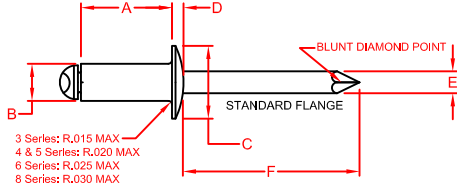


# RIVETKING® STANDARD BLIND RIVETS

## STEEL/STEEL - OPEN END



RIVET DIA.	SIZE CODE	GRIP RANGE		A	B	E	F	SHEAR LBS.F	TENSILE LBS.F
		MIN	MAX	LENGTH	BODY DIA.	MANDREL DIA	MANDREL PROTRUDE		
NOM.	SIZE	MIN	MAX	MAX		NOM.	MIN.	MIN.	MIN.
3/32"	32	.020	.125	.250	.096	.057	1.00	130	170
	34	.126	.250	.375	.090				
1/8"	41	.020	.062	.212	.128 .122	.076	1.00	260	310
	42	.063	.125	.275					
	43	.126	.187	.337					
	44	.126*	.250	.400					
	45	.251	.312	.462					
	46	.251	.375	.525					
	48	.376	.500	.650					
5/32"	410	.501	.625	.775	.159 .153	.096	1.06	370	470
	52	.020	.125	.300					
	53	.126	.187	.362					
	54	.126*	.250	.425					
	56	.251	.375	.550					
	58	.376	.500	.675					
	510	.501	.625	.800					
3/16"	62	.020	.125	.325	.191 .183	.114	1.06	540	680
	63	.126	.187	.387					
	64	.126*	.250	.450					
	66	.251	.375	.575					
	68	.376	.500	.700					
	610	.501	.625	.825					
	612	.626	.750	.950					
	614	.751	.875	1.075					
	616	.876	1.000	1.200					
	620	1.126	1.250	1.450					
1/4"	82	.020	.125	.375	.255 .246	.151	1.25	1000	1240
	84	.126	.250	.500					
	86	.251	.375	.625					
	88	.376	.500	.750					
	810	.501	.625	.875					
	812	.626	.750	1.000					
	814	.751	.875	1.125					
	816	.876	1.000	1.250					
	818	1.001	1.125	1.375					
	820	1.126	1.250	1.500					

STANDARD FLANGE - DOME HEAD		
PART NUMBER	C	D
	HEAD DIA.	HEAD HT. MAX.
SBS 32	.198	.032
SBS 34	.178	
SBS 41		
SBS 42		
SBS 43		
SBS 44	.262	.040
SBS 45	.238	
SBS 46		
SBS 48		
SBS 410		
SBS 52		
SBS 53		
SBS 54		
SBS 56	.328	.050
SBS 58	.296	
SBS 510		
SBS 512		
SBS 62		
SBS 63		
SBS 64		
SBS 66		
SBS 68	.394	.060
SBS 610	.356	
SBS 612		
SBS 614		
SBS 616		
SBS 620		
SBS 82		
SBS 84		
SBS 86		
SBS 88		
SBS 810	.525	.080
SBS 812	.475	
SBS 814		
SBS 816		
SBS 818		
SBS 820		

LARGE FLANGE - DOME HEAD		
PART NUMBER	C2	D2
	HEAD DIA.	HEAD HT. MAX.
SBS 32LF	.293	.040
SBS 34LF	.269	
SBS 41LF		
SBS 42LF		
SBS 43LF		
SBS 44LF	.390	.065
SBS 45LF	.360	
SBS 46LF		
SBS 48LF		
SBS 410LF		
SBS 52LF		
SBS 53LF		
SBS 54LF		
SBS 56LF	.488	.075
SBS 58LF	.448	
SBS 510LF		
SBS 512LF		
SBS 62LF		
SBS 63LF		
SBS 64LF		
SBS 66LF		
SBS 68LF	.650	.092
SBS 610LF	.600	
SBS 612LF		
SBS 614LF		
SBS 616LF		
SBS 620LF		
SBS 82LF		
SBS 84LF		
SBS 86LF		
SBS 88LF		
SBS 810LF	.780	.107
SBS 812LF	.720	
SBS 814LF		
SBS 816LF		
SBS 818LF		
SBS 820LF		

COUNTERSUNK HEAD		
PART NUMBER	C3	D3
	HEAD DIA.	HEAD HT. REF.
SCS 32	.187	.027
SCS 34	.161	
SCS 41		
SCS 42		
SCS 43		
SCS 44	.233	.031
SCS 45	.207	
SCS 46		
SCS 48		
SCS 410		
SCS 52		
SCS 53		
SCS 54		
SCS 56	.294	.040
SCS 58	.268	
SCS 510		
SCS 512		
SCS 62		
SCS 63		
SCS 64		
SCS 66		
SCS 68	.361	.050
SCS 610	.335	
SCS 612		
SCS 614		
SCS 616		
SCS 620		
SCS 82		
SCS 84		
SCS 86		
SCS 88		
SCS 810	.484	.060
SCS 812	.456	
SCS 814		
SCS 816		
SCS 818		
SCS 820		

DATE: 4-1-08	CHECKED: JGE	SHEET 1 OF 1	DESCRIPTION: ALL STEEL BLIND RIVETS	3-16-2016
DRAWN: SBS	DATE: 4-1-08	CHECKED: JGE	SHEET 1 OF 1	DESCRIPTION: ALL STEEL BLIND RIVETS
LIMITS UNLESS STATED	DECIMAL UNLESS ANGULAR SURFACE TEXTURE	#.015 ±2°	ORIGINAL SHEET SIZE 8.5" X 11"	TABLES REDRAWN
Industrial Rivet & Fastener Co.	200 PARTS AVENUE NORTHVALE, NJ, 07647 TEL: (201) 750 1040 info@rivet.com	REV: G	DESCRIPTION: ALL STEEL BLIND RIVETS	5-10-11
DRAWING NUMBER:	MASTER DWG: BR-0E-2008-1	LOCN: SER/REV/UPRINTS/4-INTERNAL/MAST	DESCRIPTION: ALL STEEL BLIND RIVETS	3-16-10
			DESCRIPTION: ALL STEEL BLIND RIVETS	12-8-08
			DESCRIPTION: ALL STEEL BLIND RIVETS	9-15-08
			DESCRIPTION: ALL STEEL BLIND RIVETS	8-12-08
			DESCRIPTION: ALL STEEL BLIND RIVETS	1-1-08
			DESCRIPTION: ALL STEEL BLIND RIVETS	DATE