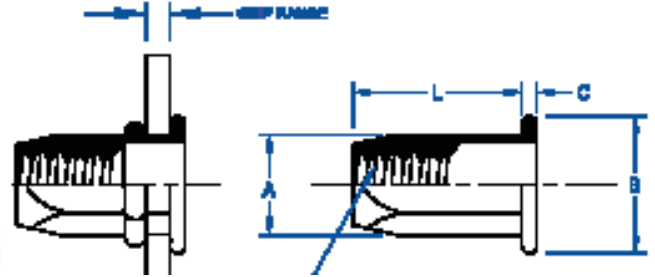


NHL Series™ Full Hex Body · Large Head

EUROPEAN STANDARD RIVETNUTS • HEAVYWALL RIVETNUTS

NHL SERIES

The RivetKing NHL Series is a heavywall European Style Rivetnut. This robust design upgrades the thickness of both the body and the head height which provides higher pullout resistance and increased endurance of the joint and assembly. NIK series has a large head and a full hex shaped body which resist spin out. Spin-Pull tools are recommended for installation of NHL series rivetnuts.



INCH	PART CODE	THREAD SIZE (INCH)	GRIP CODE	GRIP RANGE	OVERALL LENGTH REF.	HEAD DIAMETER REF.	HEAD HEIGHT REF.	BODY DIAMETER ACROSS FLATS REF.	HOLE SIZE ACROSS FLATS +.000/-.004
	8C1NHL	8-32 UNC	#1	.027 - .125	.402	.354	.039	.235	.240
	10F1NHL	10-32 UNF	#1	.027 - .125	.571	.394	.039	.275	.280
	25C1NHL	1/4-20 UNC	#1	.027 - .125	.638	.512	.059	.354	.361
	31C1NHL	5/16-18 UNC	#1	.027 - .125	.717	.630	.059	.432	.440
	31C2NHL	5/16-18 UNC	#2	.125 - .220	.827	.630	.059	.432	.440
	37C1NHL	3/8-16 UNC	#1	.030 - .140	.906	.748	.079	.511	.519

METRIC (MM)	PART CODE	THREAD SIZE (METRIC)	GRIP CODE	GRIP RANGE	LENGTH REF.	HEAD DIAMETER REF.	HEAD HEIGHT REF.	BODY DIAMETER ACROSS FLATS REF.	HOLE SIZE ACROSS FLATS +.00/-01
	.40C1NHL	M4	#1	0.25 - 2.00	10.00	9.00	1.00	6.00	6.10
	.50C1NHL	M5	#1	0.50 - 3.00	13.00	10.00	1.00	7.00	7.10
	.60C1NHL	M6	#1	0.50 - 3.00	14.50	13.00	1.50	9.00	9.10
	.80C1NHL	M8	#1	0.50 - 3.00	16.50	16.00	1.50	11.00	11.10
	.80C2NHL	M8	#2	3.00 - 5.50	19.50	16.00	1.50	11.00	11.10
	.100C1NHL	M10	#1	1.00 - 3.50	21.00	19.00	2.00	13.00	13.10
.120C1NHL	M12	#1	1.00 - 4.00	25.00	23.00	2.00	16.00	16.10	

****LONGER GRIP RANGES AND CLOSED END PARTS ARE AVAILABLE UPON REQUEST****

THE PART NUMBER IS COMPLETE BY ADDING THE MATERIAL AND FINISH CODES AS A SUFFIX TO THE PART CODE:

MATERIAL/FINISH CODES: SY = Steel, Zinc Yellow ROHS
 SZ = Steel, Zinc Clear ROHS †
 SC = Steel, Cad Yellow Plated
 SZN = Steel, Zinc Nickel 800 Hours
 BP = Brass, Plain Finish

EXAMPLE:
 Part Code 6C1NHL in Steel,
 Zinc Clear Plating is... 6C1NHL SZ

† Indicates stocked configurations