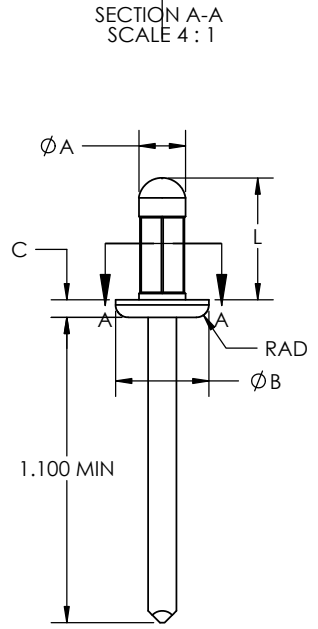
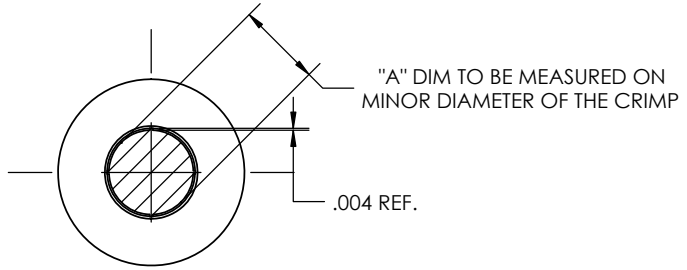


8 7 6 5 4 3 2 1

REVISIONS				
ZONE	REV.	DESCRIPTION	DATE	APPROVED
	A	REDRAWN	11/15/2011	SBS
	B	ADDED ABS51-52MG/CT	3/29/2017	AV
	C	NOTE ADDED	3/30/2018	SBS
	D	ADDED PN	1/19/2021	SBS



NOMINAL DIA	PART NUMBER	L	GRIP RANGE	A	B	C	HOLE SIZE	SHEAR	TENSILE
		LENGTH		BODY DIA	HEAD DIA	HEAD HT			
1/8"	ABS41-42MGCT	.280 .230	.031 - .125	.125 .1205	.262 .243	.051 .034	.133 .129	165 LBS.F.	230 LBS.F.
	ABS41-43MGCT	.410 .340							
	ABS42-44MGCT	.470 .410	.062 - .252						
	ABS43-45MGCT	.540 .470							
	ABS45-46MGCT	.600 .530	.187 - .375						
5/32"	ABS51-52MGCT	.270 .210	.020 - .156	.160 .155	.321 .302	.061 .044	.166 .160	255 LBS.F.	375 LBS.F.
	ABS52-54MGCT	.490 .430							
	ABS53-55MGCT	.540 .490	.125 - .312						
	ABS54-56MGCT	.620 .550							
	ABS56-58MGCT	.825 .740	.250 - .500						
3/16"	ABS62-64MGCT	.550 .460	.062 - .250	.190 .1855	.396 .377	.071 .054	.199 .191	350 LBS.F.	530 LBS.F.
	ABS64-66MGCT	.670 .600							
	ABS63-67MGCT	.740 .650	.187 - .437						
	ABS66-68MGCT	.800 .710							
	ABS610-612MGCT	1.110 1.020	.500 - .781						
				NOM.				TYP	TYP

8 PROPRIETARY AND CONFIDENTIAL THE INFORMATION CONTAINED IN THIS DRAWING IS THE SOLE PROPERTY OF <INSERT COMPANY NAME HERE>. ANY REPRODUCTION IN PART OR AS A WHOLE WITHOUT THE WRITTEN PERMISSION OF <INSERT COMPANY NAME HERE> IS PROHIBITED.

RIVET KING INDUSTRIAL RIVET & FASTENER CO. 200 PARIS AVE NORTHVALE, NJ 07647 USA	UNLESS OTHERWISE SPECIFIED	NAME	DATE	TITLE: RIVETKING MGCT MULTIGRIP DOME HEAD ALUMINUM STEEL MULTIGRIP CT CRIMP TYPE	
	TOLERANCES: ±	DRAWN	SBS		11/15/2011
	FRACTIONAL: ±	CHECKED	SBS		11/15/2011
	ANGULAR: ±	ENG APPR.	SBS		11/15/2011
	.XX: ± .XXX: ±	MFG APPR.	SBS		11/15/2011
MATERIAL: 5052 ALUMINUM	MANDREL MATERIAL: C1022-1045	Q.A.	SBS	11/15/2011	
HEAT TREAT: ANNEAL	MANDREL HEAT TREAT: NONE	DWG. NO.		REV	
FINISH: POLISHED	MANDREL FINISH: ZINC CR3+	ABS-MGCT - RevD			D
DO NOT SCALE DRAWING		SCALE: 2:1	WEIGHT:	SHEET 1 OF 1	

7 6 5 4 3 2 1