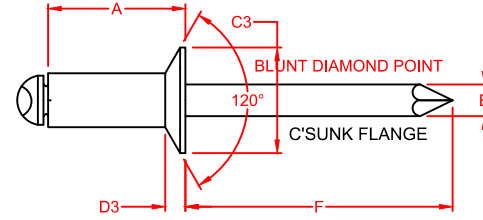
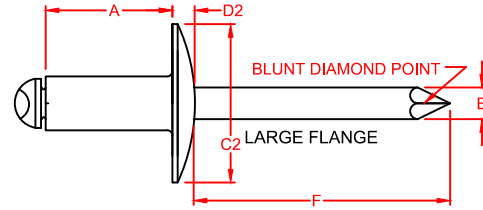
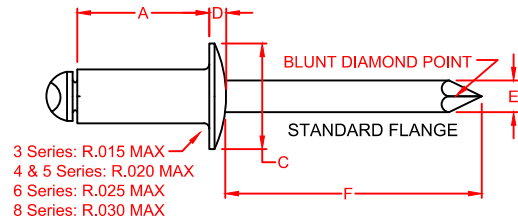


RIVETKING® BLIND RIVETS - OPEN END STAINLESS BODY/ STEEL MANDREL



RIVET DIA. NOM.	SIZE CODE	GRIP RANGE		LENGTH MAX	BODY DIA.	MANDREL DIA. NOM.	MANDREL PROTRUDE MIN.	SHEAR LBS.F. MIN.	TENSILE LBS.F. MIN.						
		MIN	MAX												
3/32"	32	.020	.125	.250	.096										
	34	.126	.250	.375	.090	.057	1.00	260	280						
1/8"	41	.020	.062	.212	.128 .122	.076	1.00	420	530						
	42	.063	.125	.275											
	43	.126	.187	.337											
	44	.126*	.250	.400											
	45	.251	.312	.462											
	46	.251	.375	.525											
	48	.376	.500	.650											
	410	.501	.625	.775											
5/32"	52	.020	.125	.300	.159 .153	.096	1.06	650	820						
	53	.126	.187	.362											
	54	.126*	.250	.425											
	56	.251	.375	.550											
	58	.376	.500	.675											
	510	.501	.625	.800											
3/16"	62	.020	.125	.325	.191 .183	.114	1.06	950	1200						
	63	.126	.187	.387											
	64	.126*	.250	.450											
	66	.251	.375	.575											
	68	.376	.500	.700											
	610	.501	.625	.825											
	612	.626	.750	.950											
	614	.751	.875	1.075											
	616	.876	1.000	1.200											
	620	1.126	1.250	1.450											
	1/4"	82	.020	.125						.375	.255 .246	.151	1.25	1700	2100
		84	.126	.250						.500					
86		.251	.375	.625											
88		.376	.500	.750											
810		.501	.625	.875											
812		.626	.750	1.000											
814		.751	.875	1.125											
816		.876	1.000	1.250											
818		1.001	1.125	1.375											
820		1.126	1.250	1.500											

STANDARD FLANGE - DOME HEAD			
PART NUMBER	HEADED	C HEAD DIA.	D HEAD HT. MAX.
FBS 32 /IR		.198	.032
FBS 34 /IR		.178	
FBS 41 /IR			
FBS 42 /IR			
FBS 43 /IR			
FBS 44 /IR		.262	.040
FBS 45 /IR		.238	
FBS 46 /IR			
FBS 48 /IR			
FBS 410 /IR			
FBS 52 /IR			
FBS 53 /IR			
FBS 54 /IR			
FBS 56 /IR		.328	.050
FBS 58 /IR		.296	
FBS 510 /IR			
FBS 512 /IR			
FBS 62 /IR			
FBS 63 /IR			
FBS 64 /IR			
FBS 66 /IR			
FBS 68 /IR			
FBS 610 /IR		.394	.060
FBS 612 /IR		.356	
FBS 614 /IR			
FBS 616 /IR			
FBS 620 /IR			
FBS 82 /IR			
FBS 84 /IR			
FBS 86 /IR			
FBS 88 /IR			
FBS 810 /IR		.525	.080
FBS 812 /IR		.475	
FBS 814 /IR			
FBS 816 /IR			
FBS 818 /IR			
FBS 820 /IR			

LARGE FLANGE - DOME HEAD			
PART NUMBER	HEADED	C2 HEAD DIA.	D2 HEAD HT. MAX.
FBS 32LF /IR		.293	
FBS 34LF /IR		.269	.040
FBS 41LF /IR			
FBS 42LF /IR			
FBS 43LF /IR			
FBS 44LF /IR		.390	.065
FBS 45LF /IR		.360	
FBS 46LF /IR			
FBS 48LF /IR			
FBS 410LF /IR			
FBS 52LF /IR			
FBS 53LF /IR			
FBS 54LF /IR			
FBS 56LF /IR		.488	.075
FBS 58LF /IR		.448	
FBS 510LF /IR			
FBS 512LF /IR			
FBS 62LF /IR			
FBS 63LF /IR			
FBS 64LF /IR			
FBS 66LF /IR			
FBS 68LF /IR			
FBS 610LF /IR		.650	.092
FBS 612LF /IR		.600	
FBS 614LF /IR			
FBS 616LF /IR			
FBS 620LF /IR			
FBS 82LF /IR			
FBS 84LF /IR			
FBS 86LF /IR			
FBS 88LF /IR			
FBS 810LF /IR		.780	.107
FBS 812LF /IR		.720	
FBS 814LF /IR			
FBS 816LF /IR			
FBS 818LF /IR			
FBS 820LF /IR			

COUNTERSUNK HEAD			
PART NUMBER	HEADED	C3 HEAD DIA.	D3 HEAD HT. REF.
FCS 32 /IR		.187	
FCS 34 /IR		.161	.027
FCS 41 /IR			
FCS 42 /IR			
FCS 43 /IR			
FCS 44 /IR		.233	.031
FCS 45 /IR		.207	
FCS 46 /IR			
FCS 48 /IR			
FCS 410 /IR			
FCS 52 /IR			
FCS 53 /IR			
FCS 54 /IR			
FCS 56 /IR		.294	.040
FCS 58 /IR		.268	
FCS 510 /IR			
FCS 512 /IR			
FCS 62 /IR			
FCS 63 /IR			
FCS 64 /IR			
FCS 66 /IR			
FCS 68 /IR		.361	.050
FCS 610 /IR		.335	
FCS 612 /IR			
FCS 614 /IR			
FCS 616 /IR			
FCS 620 /IR			
FCS 82 /IR			
FCS 84 /IR			
FCS 86 /IR			
FCS 88 /IR			
FCS 810 /IR		.484	.060
FCS 812 /IR		.456	
FCS 814 /IR			
FCS 816 /IR			
FCS 818 /IR			
FCS 820 /IR			

CONFIDENTIALITY -
THIS DRAWING AND THE INFORMATION IT CONTAINS ARE THE SOLE PROPERTY OF INDUSTRIAL RIVET & FASTENER CO. THIS DRAWING IS USED A SELLING AND/OR MANUFACTURING DEVICE WHICH MAY CONTAIN INFORMATION THAT IS PATENTED OR TRADEMARKED BY THE INDUSTRIAL RIVET & FASTENER CO. REPRODUCTION OR DISCLOSURE BY ANYONE, OF ANY PART OF THIS DRAWING OR INFORMATION THEREIN OR THE USE THEREOF FOR MAKING OTHER DRAWINGS AND/OR PRODUCTS IS STRICTLY PROHIBITED WITHOUT PRIOR WRITTEN CONSENT OF THE INDUSTRIAL RIVET & FASTENER CO.

CONTINUOUS IMPROVEMENT -
INDUSTRIAL RIVET AND FASTENER CO. HAS CONTINUOUS IMPROVEMENT POLICIES/PROCEDURES IN PLACE AND THEREFORE RESERVES THE RIGHT TO CORRECT, CHANGE OR IMPROVE PRODUCTS AND/OR SPECIFICATIONS WITHOUT NOTICE, UNLESS DESIGNATED BY AN S-XXXX SUFFIX AS PART OF THE PART NUMBER. RESPONSIBILITY DUE TO DATA TABLE TYPOGRAPHICAL ERRORS ARE LIMITED TO THE CORRECTION AND RESUBMISSION OF THE DRAWING.

DRAWN: S. SHERMAN		DATE: 4-1-08	CHECKED: ZAIGS	SHEET 1 OF 1	STAINLESS BODY / STEEL MANDREL OPEN END BLIND RIVETS		 RIVET KING® 200 PARIS AVENUE NORTHVALE, NJ, 07647 TEL: (201) 750 1040 info@rivet.com		FBS-FCS SERIES DRAWING NUMBER: MASTER DWG: BR-0E-2008-1		H REV	2022 REVIEW, IFI ALIGNMENT, TYPO CORRECTION DESCRIPTION	1-1-2022 DATE	
SURFACE TREATMENT:		RIVET: Bright Polish MANDREL: Zinc ROHS Cr3+ or PHOS												
HEAT TREATMENT:		N/R												
MATERIAL:		RIVET: 18-8 Stainless Steel per MS-03 MANDREL: C1022-1045M Steel per MS-02 SPEC# IFI Grade 50 RIVETKING#MS-02/03												
MTL RCPT		PROCESSING COLDFORM1 → STRAIN RELIEF → FINISH COLDFORM2 → FINISH → ASS'LY → FOC → PACK												
LIMITS UNLESS STATED		±.015 ANGULAR 4.2° SURFACE TEXTURE		DIMENSIONS IN INCHES UNLESS OTHERWISE SPECIFIED METRIC DIMENSIONS IN PARENTHESES REMOVE ALL BURRS AND SHARP EDGES ORIGINAL SHEET SIZE 8.5" X 11"		 RIVET KING®		200 PARIS AVENUE NORTHVALE, NJ, 07647 TEL: (201) 750 1040 info@rivet.com		FBS-FCS SERIES DRAWING NUMBER: MASTER DWG: BR-0E-2008-1		H REV	2022 REVIEW, IFI ALIGNMENT, TYPO CORRECTION DESCRIPTION	1-1-2022 DATE