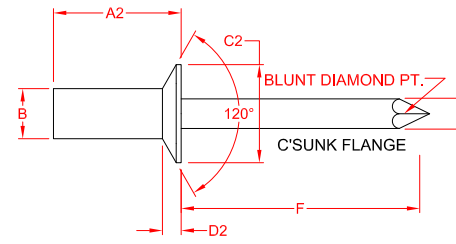
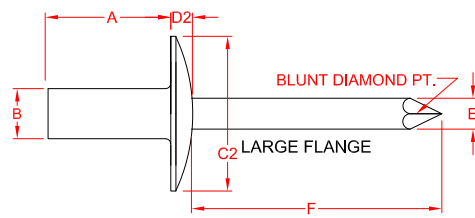
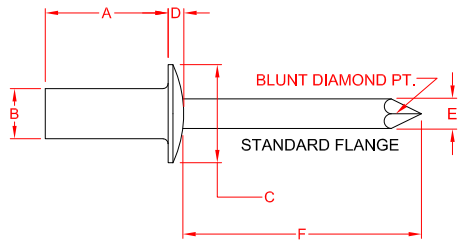


RIVETKING® BLIND RIVETS - CLOSED END COPPER/STEEL



MANUFACTURED IN ACCORDANCE WITH RIVETKING MATERIAL, PROCESSING AND TESTING REQUIREMENTS

RIVET Ø	SIZE CODE	GRIP RANGE		BODY		MANDREL		PERFORMANCE	
				LENG.	BODY Ø	WIRE Ø	O/H LENG.	SHEAR LBS.F	TENSILE LBS.F
		NOM.	SIZE	MIN	MAX	MAX	Ø	MAX.	MIN.
3/32"	32	.020	.125	-	.096	.057	1.00	-	-
	34	.126	.250	-	.090				
	41	.020	.062	.297	.128	.074	1.00	220	300
	42	.063	.125	.360					
	43	.126	.187	.422					
	44	.188	.250	.485					
	45	.251	.312	.547					
	46	.251	.375	.610					
48	.376	.500	.735						
410	.501	.625	.760						
1/8"	52	.020	.125	.375	.159	.092	1.06	-	-
	53	.126	.187	.437					
	54	.188	.250	.500					
	56	.313	.375	.562					
	58	.376	.500	.625					
	510	.501	.625	.750					
	512	.626	.750	.875					
	5/32"	62	.020	.125					
63		.126	.187	.468					
64		.126*	.250	.531					
66		.251	.375	.656					
68		.376	.500	.781					
610		.501	.625	.906					
612		.626	.750	1.026					
3/16"		82	.020	.125	.445	.255	.146	1.25	-
	84	.126	.250	.570					
	86	.251	.375	.695					
	88	.376	.500	.820					
	810	.501	.625	.945					
	812	.626	.750	1.070					

PART NUMBER	STANDARD FLANGE	
	C	D
	BODY	
	HEAD DIA.	HEAD HT. MAX.
CBS 32CE /IR	.198	.032
CBS 34CE /IR	.178	.032
CBS 41CE /IR		
CBS 42CE /IR		
CBS 43CE /IR		
CBS 44CE /IR	.252	.050
CBS 45CE /IR	.224	.050
CBS 46CE /IR		
CBS 48CE /IR		
CBS 410CE /IR		
CBS 52CE /IR		
CBS 53CE /IR		
CBS 54CE /IR	.328	.065
CBS 56CE /IR	.296	.065
CBS 58CE /IR		
CBS 510CE /IR		
CBS 512CE /IR		
CBS 62CE /IR		
CBS 63CE /IR		
CBS 64CE /IR	.394	.080
CBS 66CE /IR	.356	.080
CBS 68CE /IR		
CBS 610CE /IR		
CBS 612CE /IR		
CBS 82CE /IR		
CBS 84CE /IR		
CBS 86CE /IR	.525	.100
CBS 88CE /IR	.475	.100
CBS 810CE /IR		
CBS 812CE /IR		

PART NUMBER	LARGE FLANGE	
	C2	D2
	BODY	
	HEAD DIA.	HEAD HT. MAX.
CBS 32CELF /IR	.293	.065
CBS 34CELF /IR	.269	.065
CBS 41CELF /IR		
CBS 42CELF /IR		
CBS 43CELF /IR		
CBS 44CELF /IR	.390	.075
CBS 45CELF /IR	.360	.075
CBS 46CELF /IR		
CBS 48CELF /IR		
CBS 410CELF /IR		
CBS 52CELF /IR		
CBS 53CELF /IR		
CBS 54CELF /IR	.488	.085
CBS 56CELF /IR	.448	.085
CBS 58CELF /IR		
CBS 510CELF /IR		
CBS 512CELF /IR		
CBS 62CELF /IR		
CBS 63CELF /IR		
CBS 64CELF /IR	.650	.095
CBS 66CELF /IR	.600	.095
CBS 68CELF /IR		
CBS 610CELF /IR		
CBS 612CELF /IR		
CBS 82CELF /IR		
CBS 84CELF /IR		
CBS 86CELF /IR	.780	.110
CBS 88CELF /IR	.720	.110
CBS 810CELF /IR		
CBS 812CELF /IR		

PART NUMBER	COUNTERSUNK HEAD		
	A2	C3	D3
	BODY		
	LENG.	HEAD DIA.	HEAD HT. MAX.
CCS 32CE /IR	-	.187	.027
CCS 34CE /IR	-	.161	.027
CCS 41CE /IR	.332	.245	.042
CCS 42CE /IR	.395		
CCS 43CE /IR	.457		
CCS 44CE /IR	.520		
CCS 45CE /IR	.582		
CCS 46CE /IR	.645		
CCS 48CE /IR	.770		
CCS 410CE /IR	-		
CCS 52CE /IR	.425	.328	.051
CCS 53CE /IR	.487		
CCS 54CE /IR	.550		
CCS 56CE /IR	.675		
CCS 58CE /IR	.800		
CCS 510CE /IR	-		
CCS 512CE /IR	-		
CCS 62CE /IR	.471		
CCS 63CE /IR	.538		
CCS 64CE /IR	.601		
CCS 66CE /IR	.736		
CCS 68CE /IR	.851		
CCS 610CE /IR	1.026		
CCS 612CE /IR	1.101		
CCS 82CE /IR	.525	.525	.080
CCS 84CE /IR	.650		
CCS 86CE /IR	.775		
CCS 88CE /IR	.900		
CCS 810CE /IR	1.025		
CCS 812CE /IR	1.150		

CONFIDENTIALITY - THIS DRAWING AND THE INFORMATION IT CONTAINS ARE THE SOLE PROPERTY OF INDUSTRIAL RIVET & FASTENER CO. THIS DRAWING IS USED AS A SELLING AND/OR MANUFACTURING DEVICE WHICH MAY CONTAIN INFORMATION THAT IS PATENTED OR TRADEMARKED BY THE INDUSTRIAL RIVET & FASTENER CO. REPRODUCTION OR DISCLOSURE BY ANYONE, OF ANY PART OF THIS DRAWING OR INFORMATION THEREIN OR THE USE THEREOF FOR MAKING OTHER DRAWINGS AND/OR PRODUCTS IS STRICTLY PROHIBITED WITHOUT PRIOR WRITTEN CONSENT OF THE INDUSTRIAL RIVET & FASTENER CO.

CONTINUOUS IMPROVEMENT - INDUSTRIAL RIVET AND FASTENER CO. HAS CONTINUOUS IMPROVEMENT POLICIES/PROCEDURES IN PLACE AND THEREFORE RESERVES THE RIGHT TO CORRECT, CHANGE OR IMPROVE PRODUCTS AND/OR SPECIFICATIONS WITHOUT NOTICE, UNLESS DESIGNATED BY AN S-XXXX SUFFIX AS PART OF THE PART NUMBER. RESPONSIBILITY DUE TO DATA TABLE TYPOGRAPHICAL ERRORS ARE LIMITED TO THE CORRECTION AND RESUBMISSION OF THE DRAWING.

DATE: 4-1-08	CHECKED: ZAIS	SHEET 1 OF 1	REVISIONS
DRAWN: S. SHERMAN			REV: G
DESCRIPTION: COPPER/STEEL CLOSED END BLIND RIVETS			
LIMITS STATED: ±.015	ANGULAR: ±2°	SURFACE TEXTURE: 100 (12.5)	ORIGINAL SHEET SIZE: 8.5" X 11"
		200 PARIS AVENUE NORTHVALE, NJ 07647 TEL: (201) 750 1040 info@rivetking.com	
Industrial Rivet & Fastener Co.		CBS-CE, CBS-CELF, CBS-CE	
DRAWING NUMBER:			MASTER DWG: BR-02-2008-1 LOCN: SERVER/BLUEPRINTS/A-INTERNAL/MAST
NEW FORMAT & ALIGN TO IFI			DATE: 11-22-2022
DESCRIPTION			REV: G