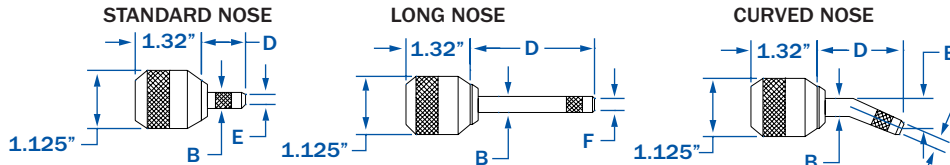


# RIVETKING® NOSE JAW SELECTION

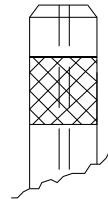
ROHS COMPLIANT

The nose jaw is an integral part of the QuickRiveting System®. The type of nose jaw you select is application dependent. While the flat end form is most common, the recessed end form allows for high clamp up or can be used to deform a countersunk head into a dome head. Long nose jaws are used in hard to reach or limited access areas. Nose jaws can be designed to fit your application. Contact our applications engineering department for custom designs and application assistance.

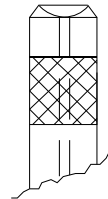


RIVET DIA.	PART NUMBER	NOSE TYPE & FORM	DIMENSIONS		
			B	D	E
3/32" (2.4)	Z-7150-3003	Standard Flat	.36" (9.14)	1.3" (33.02)	.16" (4.06)
	Z-7150-4003	Long Flat	.41" (10.41)	2.3" (58.42)	.16" (4.06)
	Z-7150-5003	Curved Long Flat	.41" (10.41)	2.28" (57.91)	.16" (4.06)
1/8" (3.2)	Z-7150-3004	Standard Flat	.41" (10.41)	1.18" (29.97)	.20" (5.08)
	Z-7170-3004	Standard Recessed	.41" (10.41)	1.20" (30.48)	.30" (7.62)
	Z-7150-4004	Long Flat	.41" (10.41)	2.18" (55.37)	.20" (5.08)
	Z-7170-3204	Long Recessed	.41" (10.41)	2.18" (55.37)	.30" (7.62)
	Z-7150-5004	Curved Long Flat	.41" (10.41)	2.22" (56.39)	.20" (5.08)
5/32" (4.0)	Z-7170-3304	Curved Long Recessed	.41" (10.41)	2.22" (56.39)	.30" (7.62)
	Z-7150-3005	Standard Flat	.48" (12.19)	1.30" (33.02)	.24" (6.10)
	Z-7170-3005	Standard Recessed	.48" (12.19)	1.32" (35.53)	.41" (10.41)
	Z-7150-4005	Long Flat	.48" (12.19)	2.30" (58.42)	.24" (6.10)
	Z-7170-3205	Long Recessed	.48" (12.19)	2.30" (58.42)	.41" (10.41)
	Z-7150-5005	Curved Long Flat	.48" (12.19)	2.23" (56.64)	.24" (6.10)
3/16" (4.8)	Z-7170-3305	Curved Long Recessed	.48" (12.19)	2.23" (56.64)	.41" (10.41)
	Z-7150-3006	Standard Flat	.56" (14.22)	1.18" (29.97)	.33" (8.38)
	Z-7170-3006	Standard Recessed	.56" (14.22)	1.20" (30.48)	.47" (11.94)
	Z-7150-4006	Long Flat	.56" (14.22)	2.30" (58.42)	.33" (8.38)
	Z-7170-3206	Long Recessed	.56" (14.22)	2.30" (58.42)	.47" (11.94)
	Z-7150-5006	Curved Long Flat	.56" (14.22)	2.21" (56.13)	.33" (8.38)
	Z-7170-3306	Curved Long Recessed	.56" (14.22)	2.21" (56.13)	.47" (11.94)

FLAT END FORM



RECESSED END FORM



METRIC DIMENSIONS ARE IN PARENTHESIS

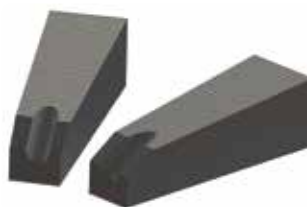
## CONSUMABLE TOOLING - MISCELLANEOUS

REF. NO.	PART NUMBER	NOSE TYPE & FORM
1	ZRTM-IC	CURSOR
2	ZRTM-VJ	VICE JAWS
3	ZRTM-HO	HYDRAULIC OIL

CURSOR



VICE JAWS



HYDRAULIC OIL

