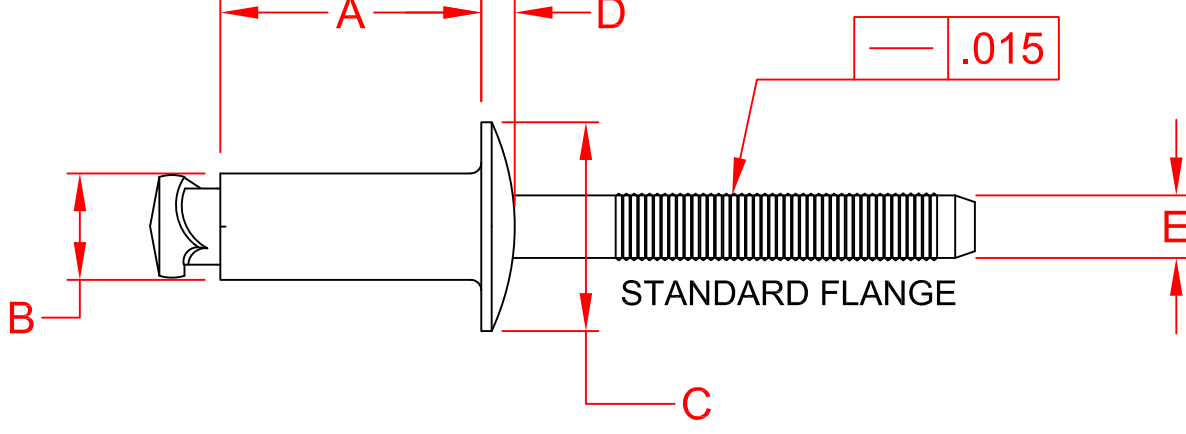


RIVETKING® T RIVET ABST SERIES, ALUMINUM/STEEL




SIZE CODE	GRIP RANGE			RIVET LENGTH	RIVET DIA.	MANDREL DIA.	MANDREL PROTRUDE	
	MIN	MID	MAX					
3/16"	0612	.109	.125	.140	.395 MAX	.187 NOM.	.116 REF.	1.06 MIN.
	6187	.171	.187	.203	.457 MAX			
	6250	.234	.250	.265	.529 MAX			
	6312	.296	.312	.328	.582 MAX			
	6375	.359	.375	.390	.645 MAX			
	6437	.421	.437	.453	.707 MAX			
	6500	.484	.550	.515	.770 MAX			
	1/4"	8140	.093	.125	.156			
8187		.156	.157	.218	.562 MAX			
8250		.218	.250	.281	.625 MAX			
8312		.281	.312	.343	.687 MAX			
8375		.343	.375	.406	.750 MAX			
8437		.406	.437	.468	.812 MAX			
8519		.468	.500	.531	.875 MAX			
8620		.531	.562	.593	.937 MAX			

PART NUMBER	DOME HEAD		LARGE FLANGE	
	C HEAD DIA.	D HEAD HEIGHT	C HEAD DIA.	D HEAD HEIGHT
ABST-0612	.405 .375	.091 REF.	ABST-0612	.592 .532
ABST-6187			ABST-6187	
ABST-6250			ABST-6250	
ABST-6312			ABST-6312	
ABST-6375			ABST-6375	
ABST-6437			ABST-6437	
ABST-6500			ABST-6500	
ABST-8140			.550 .490	
ABST-8187	ABST-8187			
ABST-8250	ABST-8250			
ABST-8312	ABST-8312			
ABST-8375	ABST-8375			
ABST-8437	ABST-8437			
ABST-8519	ABST-8519			
ABST-8620	ABST-8620			

- CONFIDENTIALITY -

THIS DRAWING AND THE INFORMATION IT CONTAINS ARE THE SOLE PROPERTY OF INDUSTRIAL RIVET & FASTENER CO., INC.. THIS DRAWING IS USED A SELLING AND/OR MANUFACTURING DEVICE WHICH MAY CONTAIN INFORMATION THAT IS PATENTED OR TRADEMARKED BY THE INDUSTRIAL RIVET & FASTENER CO., INC.. REPRODUCTION OR DISCLOSURE BY ANYONE, OF ANY PART OF THIS DRAWING OR INFORMATION THEREIN OR THE USE THEREOF FOR MAKING OTHER DRAWINGS AND/OR PRODUCTS IS STRICTLY PROHIBITED WITHOUT PRIOR WRITTEN CONSENT OF THE INDUSTRIAL RIVET & FASTENER CO., INC.

DRAWN: SBS	CHECKED: AV	SHEET 1 OF 1	200 PARTS AVENUE NORTHVALE, NJ, 07647 TEL: (201) 750 1040 info@rivet.com	REVISIONS	DATE
DESCRIPTION: ABST BLIND RIVET ALUMINUM / STEEL			 Industrial Rivet & Fastener Co.	C	2-13-2019
				B	7-20-2018
				A	TYPO BODY DIA, ADDED LARGE FLANGE
			REL	RELEASE	2/3/2016
			REV	DESCRIPTION	DATE
SURFACE TREATMENT		RIVET: Bright Polish MANDREL: Zn Plated, Cr3+ ROHS Compliant			
HEAT TREATMENT:		RIVET: Belt Anneal @ 660°F for 90 Mins. MANDREL: None			
MATERIAL:		RIVET: 5.0MG ALUMINUM MANDREL: C10B21~C1045			
<input type="checkbox"/> MTL RCPT <input type="checkbox"/> COLDFORM2		<input type="checkbox"/> COLDFORM1 <input type="checkbox"/> FINISH		<input type="checkbox"/> ANNEAL <input type="checkbox"/> ASS'LY <input type="checkbox"/> FOC <input type="checkbox"/> FINISH PACK	
DIMENSIONS IN INCHES UNLESS OTHERWISE STATED. METRIC DIMENSIONS IN PARENTHESIS IF ALL BURS AND SHARP EDGES. ORIGINAL SHEET SIZE 8.5" X 11"					
DRAWING NUMBER:		ABST SERIES			C